

## JUNBA 2008 Technology Fair At Santa Clara, CA.

### Collaborative Research Development to generate "Innovative Outcome" in Global Environment

January 11, 2008

**Koichi Terasawa**  
Professor  
Division of University Corporate Relations  
The University of Tokyo

All rights Reserved. Copyright (c) 2008 The University of Tokyo

## The University of Tokyo – Who We Are

### Faculties, Graduate Schools

Undergraduate schools	10
Graduate Schools	15
Research Institutes	11
Research Centers	21

### Employed Researchers

Professors	1,430
Associate Professors	1,400
Assistant Professors	1,300
Total Researchers	4,200

### Students

PhD Course Students	6,200
Master Course Students	7,400
Undergraduate Students	14,500

### Major Funds

Government (MoE etc.)	900M
Sponsored Research	200M
Grants	190M
Endowment	90M
<b>Collaborative Research</b>	<b>40M</b>

### Strength of UT

- Research Capacity – More than 4,000 researchers in the wide range of expertise
- Diversity – Multi-disciplinary Orientation
- Leading Edge – World's Most Advanced Research Outcomes

2008/01/11

Division of University Corporate Relations, The University of Tokyo

1

## The University of Tokyo Overview

### Undergraduate School (10)

- Faculty of Law
- Faculty of Medicine
- Faculty of Engineering
- Faculty of Letters
- Faculty of Science
- Faculty of Agricultural
- Faculty of Economics
- College of Arts and Sciences
- Faculty of Education
- Faculty of Pharmaceutical Sciences

### Graduate Schools (15)

- Law and Politics
- Medicine
- Engineering
- Humanities and Sociology
- Science
- Agricultural and Life Sciences
- Economics
- Arts and Sciences
- Education
- Pharmaceutical Sciences
- Mathematical Sciences
- Frontier Sciences
- Information Science and Technology
- Interfaculty Initiative in Information Studies
- Public Policy

2008/01/11

Division of University Corporate Relations, The University of Tokyo

2

## The University of Tokyo Overview

### Research Institutes (11)

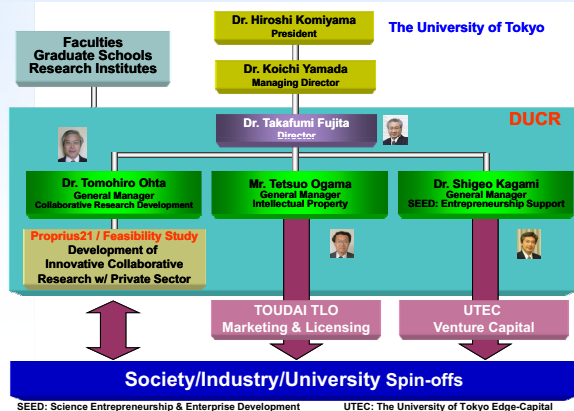
- Institute of Medical Science
- Earthquake Research Institute
- Institute of Oriental Culture
- Institute of Social Science
- Institute of Industrial Science
- Historio-graphical Institute
- Institute of Molecular and Cellular Bioscience
- Institute for Cosmic Ray Research
- Institute for Solid State Physics
- Ocean Research Institute
- Research Center for Advanced Science & Technology

2008/01/11

Division of University Corporate Relations, The University of Tokyo

3

## Division of University Corporate Relations (DUCR)



2008/01/11

Division of University Corporate Relations, The University of Tokyo

4

## Staff Members of DUCR

### Collaborative Research Development

- Tomohiro Ohta, Professor & General Manager
- Koichi Terasawa, Professor
- Takahiro Mamine, Professor
- Masayuki Hori, Professor
- Takayuki Ohba, Professor
- Takahiro Homma, Professor
- Tomohira Tabata, Associate Professor
- Masaki Sagehashi, Associate Professor
- Kazuhiro Kakchi, Associate Professor
- Yukio Ebino, Senior Program Officer
- Mikio Aramata, Senior Program Officer
- Junko Monden, Coordinator
- Miyuki Suzuki, Administrator
- Keiko Yuno, Administrator

### Intellectual Property Management

- Tetsuo Ogama, Professor & General Manager
- Takehisa Tokunaga, Senior Manager
- Toru Nakasuji, Senior Manager
- Shizuo Furukawa, Senior Manager
- Kazutaki Shigemori, Senior Manager
- Nobuko Wako, Senior Manager
- Tsugio Okada, Senior Manager
- Chizuru Kato, Manager

### SEED: Entrepreneurship Support for University Spin-offs

- Shigeo Kagami, Professor & General Manager
- Yoshihito Shiraishi, Associate Professor

SEED: Science Entrepreneurship & Enterprise Development

2008/01/11

Division of University Corporate Relations, The University of Tokyo

5

## Feasibility Study for Innovation Proprius21 Scheme



All rights Reserved. Copyright (c) 2008 The University of Tokyo

## Collaborative Research to generate “Expected Result” or “Innovative Outcome”

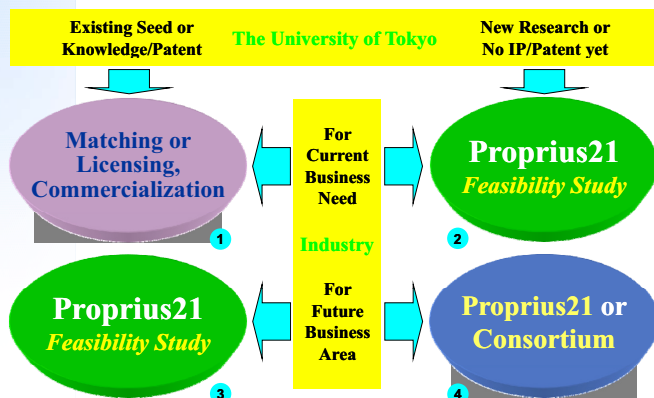
- ❑ **What is “Innovation”?**  
It is not produced by use of the existing seed technology or patent in the university to meet the present needs of industry or society.
- ❑ **Innovation will really be produced by the collaborative research to develop both corporate or industry need and seed technology during the period 10 to 15 years from now.**
- ❑ It will not be generated only by engineering expertise but also by interdisciplinary intelligence in a wide range of knowledge or expertise.
- ❑ **The University of Tokyo has over 4,000 researchers in the region of science, engineering, medical, pharmaceutical, life sciences as well as law, economy, social and cultural science.**

2008/01/11

Division of University Corporate Relations, The University of Tokyo

7

## Scope of Proprius21 – Feasibility Study

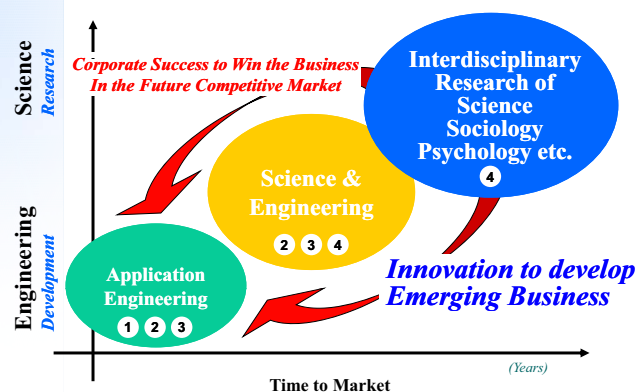


2008/01/11

Division of University Corporate Relations, The University of Tokyo

8

## Goal to produce Innovative Outcome



2008/01/11

Division of University Corporate Relations, The University of Tokyo

9

## Feasibility Study prior to Collaborative Research to generate “Expected Result” for Mutual Benefit

### Proprius21 Feasibility Study

(Detail Planning prior to the Research)



Conducted under a contract (mainly NDA)

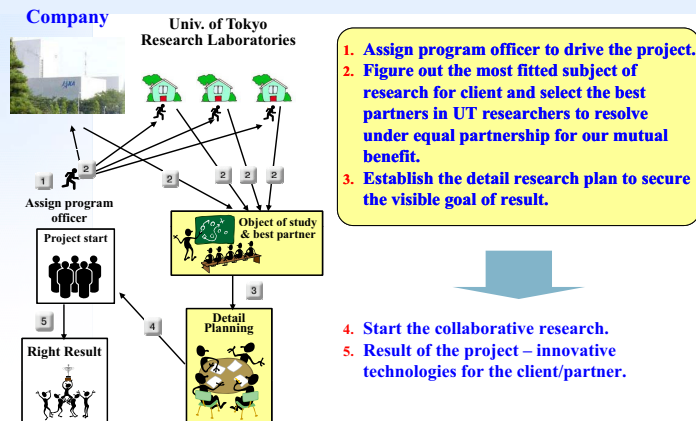


2008/01/11

Division of University Corporate Relations, The University of Tokyo

10

## Example of the Steps of Feasibility Study



2008/01/11

Division of University Corporate Relations, The University of Tokyo

11

## Examples of Proprius21 – Details in Brochure

Mitsubishi Electric Corporation

*Development of a Security System with a Built-in Function  
to Minimize the Impact of Secondary Disasters.*

PANASONIC (Matsushita Electric Industrial Co., Ltd.)

*Lifestyle Support Robot*

*Making a public appeal for applications within the University*

Sun Microsystems Inc.

*Collaborative Exploration in the field of  
Information Science & Technology*

NEC Corporation

*Research about Social Interaction*

## Examples of Proprius21 – Details in Brochure

Mizuho Information & Research Institute

*Collaborative Research on Creating a System for the Proliferation of  
University Software to Both Society and Industry World*

NISSAN Motor Co., Ltd.

*Collaborative Research to generate Research Theme in Intellectual  
Cognition for Future Automobiles*

NISSAN Motor Co., Ltd.

*Detection of Bionics Information to realize Driving Pleasure  
with the presumption of Subjective Quantity for Driver's Positive  
Stimulus*

NEC, HITACHI, FUJITSU and Nihon IBM

*Service Innovation Research Working Group*

## Examples of Proprius21 – Details in Brochure

Sumitomo Mitsui Banking Corporation (SMBC)

*Development of University Corporate Relation Program  
for Middle Size Companies*

Mitsubishi Research Institute (MRI)

*Bird's-eye View Research about Theme Settlement for Future Society*

